

PTA NEWSLETTER

FEBRUARY 2024

WHO ARE WE?

Introducing the Wanstead High PTA

Relaunched in 2023, the WHS PTA (parent teacher association) is a group of parents determined to help the school by raising much-needed funds and organising social events that help parents meet each other and build up a brilliant school community. We've got big plans and lots of fun events in store – and would love to see as many of you there as possible.

If you'd like to get involved – whether that's by helping out on the bar at the next school show, organising a bake sale or coming up with a new fundraising drive – we'd love to hear from you.

Get in touch or come along to our next meeting on Monday 26th Feb (venue tbc).

Everyone's welcome!

Chair Dennis Weeks

Vice chair Mary Richardson

Secretary Louise Russell

Treasurer Chris Carr



WHS PTA
www.pta-events.com

Email info@ptawansteadhigh.co.uk

Follow us on

Instagram @whspta and

Facebook Whs.pta

Scan the QR code to go to our new PTA events website.
pta-events.com/whspta/index.cfm

DESPERATELY SEEKING ...

We're always happy to welcome new volunteers and offers of help.

In particular, we're looking for a **Volunteer PTA Parent Fundraising Coordinator** to seek and manage donations from parents – this could be

through ParentPay, setting up and running JustGiving crowdfunding campaigns or seeking out match-funding donors.

If you've got some free time and would like to give it a go, email us at info@ptawansteadhigh.co.uk

NEWS

As well as the big-ticket changes

we are aiming to provide for the school – see #BuildaBetterWanstead High – money raised by the PTA also goes to support other smaller initiatives throughout the school year.

Books, books, books

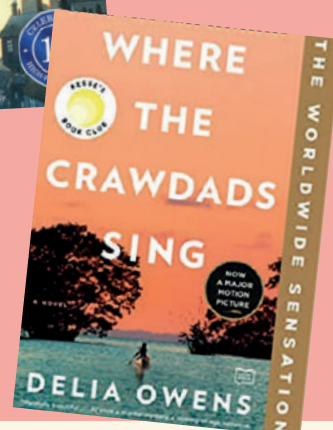
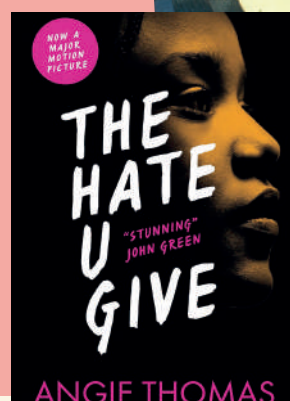
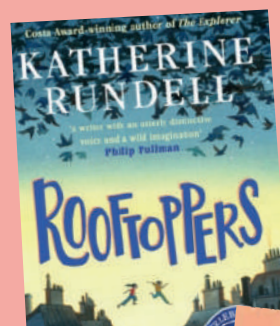
This year, we have donated just over £7,000 of PTA funds to support the school's DEAL – Drop Everything and Listen – reading and literacy initiative. Reading for pleasure is one of the key indicators of children's educational success, and being read to aloud has been proven to be one of the best ways to gain

fluency and deeper understanding – among the more adept as well as less competent readers.

The school has been using the DEAL strategy in tutor time, with the teacher reading stories aloud to model fluency. Pupils listen and follow the text then re-read it, either chorally or in pairs, and answer questions and discussion points.

Until now, classes have been reading extracts printed on photocopied booklets, but our donation has enabled the school to buy a full set of new books for each form room.

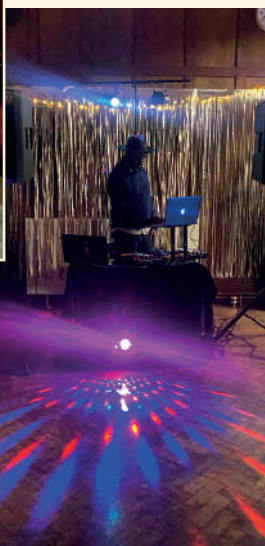
A selection of titles designed to inspire the different year groups has been chosen and the books should be in the classrooms soon.



#BuildABetterWansteadHigh

We hope that by now you have heard about our ambition to raise half-a-million pounds to pay for much-needed improvements to the school. If not, here's a reminder. The key projects we want to fund are: 1) building an all-weather shelter for the playground, 2) providing drainage for the often unusable muddy sports field and 3) replacing the toilet blocks that are in such a state of neglect, many kids refuse to use them. We know it's an ambitious target but we also believe it's possible if we all pull together. Please think about supporting us in any way you can to help give our kids the school they deserve.

HELP US REACH OUR TARGET!!!
£500,000



NEWS

Here's what we've been up to ...

The PTA kicked off the school year with a Quiz Night on September 22nd. An amazing 180 of you squeezed into the assembly hall for an evening of fun and fiendish questions, raising **£3,614** – a figure that is set to double through match-funding.

THANK YOU to all our fantastic local raffle prize donors:

Provender, The Duke, The Cardamom Room, The Nightingale, Robins Pie & Mash, La Bakerie, Otto, Filika, Stow Brothers, Eco Cleaning Services, Two Tough Fitness, Petty Son and Prestwich, Venture Studios South Woodford, Keith Gold Photography, Lillies of Wanstead, Daisys, Polished by Jo, Angels, Daygustation, Biyoni Hair, The Art Shop, M&S.

Our first Christmas fundraising party was also a great success, getting everyone in the festive spirit, as well as raising **£2,168** – a figure that we hope to double through match-funding.

A HUGE thank you to THE DUKE pub for their support!



DATES FOR THE DIARY Comedy Night at Wanstead High School on **Friday 9th February**. Quiz Night at Wanstead High School on **Friday 22nd March** and the Centenary Ball, celebrating 100 years of WHS, at Eton Manor RFC on **Saturday 15th June**. Save the date to join us for a fabulous once-in-a-century event.

OLD IS THE NEW NEW

Buying pre-loved uniform not only helps you save money, it helps the school raise much-needed funds and it helps the environment by reducing waste – it's a win, win, win! And, thanks to WHS parents Lucy Flinter and Kerry Flitcroft, Wanstead High now has its very own pre-loved uniform shop. Not only that, we are the only Redbridge secondary school participating in the School Uniform Bank scheme, an east London initiative to reduce textile waste.

HOW YOU CAN GET INVOLVED

We accept donations of branded uniform –

blazers, ties, jumpers and WHS PE kit – in good, clean condition, then sell it for about 50% of the RRP. If you have any of these items that have been outgrown or are no longer needed, drop them off at the School Uniform Bank collection bins in the school reception areas and at Wanstead Leisure Centre. And if you want to buy, you can find our current stock list, along with details of how to order and when we are holding our next pop-up shop on the web-site below or by scanning the QR code.



→ sites.google.com/ptawansteadhigh.co.uk/preloved-uniform/home



WINNING TEAMWORK

And on the subject of keeping your togs in tip-top condition, the PTA has just bought a tumble dryer for the sports department. They haven't had one until now, meaning school equipment was used wet from one class to the next. Now they can wash and dry all the kit, ensuring it's all more widely used by pupils.

★ LOCAL STAR

Saleh Hamayoon
Elegance Dry Cleaners

Saleh, a former WHS parent who owns Elegance Dry Cleaners on the high street, has been supporting the pre-loved shop by dry-cleaning all the donated blazers for free. It has made a real difference to be able to offer these pre-loved items in such pristine condition, and we can thoroughly recommend Elegance for all your dry-cleaning needs.

THANK YOU!



FOCUS ON

MATCH-FUNDING

What is it?

Match-funding is a way in which companies support their employees' charity fundraising efforts by matching any amount they raise – meaning that it's a chance for us to double any money we make.

As a registered charity, we can benefit if we find a match-funding partner for each of the projects we undertake – from parties and quiz nights to pre-loved sales.

Which companies

do this? Many larger companies especially are keen to give back in this way. These include: Boots, Bank of Scotland, Halifax, JP Morgan, Debenhams, Legal & General, Shell, B&Q, Npower, HSBC, O2, Whitbread, WH Smith, Natwest, Vodafone, Santander, Tesco and many more.

How can I help?

Ask your HR department if your employer has a match-funding scheme or if they are willing to match amounts raised through fundraising efforts by their employees. If they are, please let us know, so we can "match" you to one of our upcoming events and double its impact.

info@ptawansteadhigh.co.uk

**HAVE
YOUR SAY**

We are a small team and would really value any ideas you have for fundraising at the school or feedback on a previous event. Email us at pta@whs.co.uk

WANSTEAD COMEDY NIGHT PRESENTS

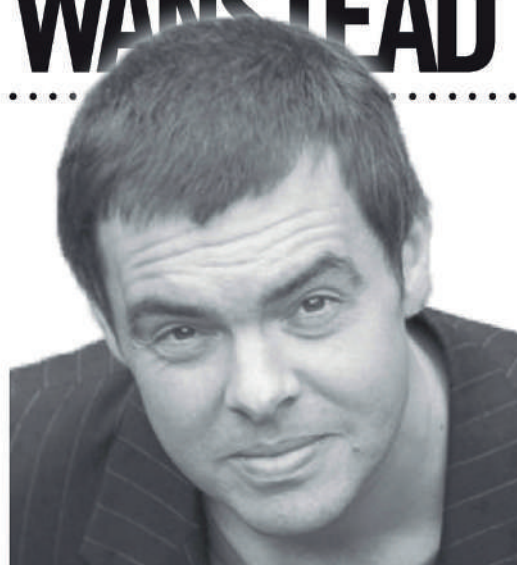
FUNDRAISING COMEDY NIGHT

TICKETS
£15

FRIDAY 9th FEBRUARY 2024

Registered Charity: 277767 Enquiries: whspta23@gmail.com

WANSTEAD HIGH SCHOOL PTA



HEADLINER ★★★★★
TIM SHISHODIA

‘Lively unpredictable delivery and deliciously daft punchlines.’ Chortle

Leicester Square Theatre Comedian of the Year

PLUS...



KIRK FONTAINE



KELLY FORD



SHERAZ YOUSAF



GRAEME MATHEWS

£15

DOORS & BAR FROM 7:00pm / SHOW 8:00pm

WANSTEAD HIGH SCHOOL

REDBRIDGE LANE WEST, LONDON, E11 2JZ

BUY TICKETS VIA: www.wansteadium.com

