



# Friends of Halsford Park Newsletter

Email: [halsford.pta@gmail.com](mailto:halsford.pta@gmail.com) Facebook: Friends of Halsford Park School

Website: [www.pta-events.co.uk/friendsofhalsfordpark](http://www.pta-events.co.uk/friendsofhalsfordpark)

200 Club Winner  
September 2020

No.17 – Laura  
Puddefoot-Knaggs - £77

200 club money  
contributes towards IT  
software and equipment

## Welcome

Last school year was certainly a game of two halves for us at the PTA. September to mid-March was packed full of events; the colour run, film nights, a panto, two discos and a Christmas fair, tuckshops and doughnut sales, as well as a quiz and chips night and gin tasting evening. Then... everything stopped. Like everyone, we had to pause, regroup and re-evaluate. We were forced to cancel a lot of events, but then we started to adapt and find ways to move forward. The socially distanced relay in May was a storming success, not least because it brought the school community together at a time when everyone was forced apart. We took part in a virtual balloon race, produced lockdown school photos and started selling face masks. Back in March, we never thought it possible, but by the end of August, we had raised

**£33,464.85**

plus an additional £4,181.00 in grants! See page 3 for details of how we raised and spent our funds over the last year.

Although we have started 2020/21 with money in the bank, we can't afford to be complacent. Our spending commitment to the school this year is already around £8,000; for software licences, books, class funds and educational enrichment activities, and our funding is more important than ever, as the school strives to deliver its 'comeback curriculum' and respond to the impact of Covid-19. With face to face events off the cards for the foreseeable future, we are continuing to innovate and adjust, and hope you will support us however you can.

For details of our new 2020/21 Committee, see page 2.

## Face Masks

During lockdown, Mary Preece, who has grandchildren at Halsford Park, offered to make reusable face masks in aid of the Friends of Halsford Park School. Soon, we had a little cottage industry going, with parents, grandparents and even an ex-pupil sewing and distributing face masks. Keen to ensure everyone in our community who needs a mask can have one, we have been offering them for a suggested donation (of £4), and in a range of sizes, colours and patterns.

Recently, we have started sewing masks in a poppy design, and are donating £2 per mask sold to the Royal British Legion. We have also donated masks to Mória Refugee Camp in Greece.

If you need a mask, please contact Penny Duly on Facebook, or email [halsford.pta@gmail.com](mailto:halsford.pta@gmail.com). There are a wide variety of fabrics available, including the poppy prints and Christmas patterns. Thank you to everyone who has donated fabric for masks, bought masks or supported our team in any other way. Our fundraising total to date is a fantastic £6,500!



## Textile Recycling

Our new textile recycling bank is now in place under the bikesheds, permanently available for donations of; reusable clothing, paired shoes, accessories, bed linen, towels and sleeping bags. When donating, please do not include school or work uniforms with logos, damaged or stained items, unpaired items, curtains, cushion covers, blankets or toys.

Please follow the one-way system and maintain social distancing when dropping off any items. If the bank is full when you visit, please take your donations back home with you, and let us know via Facebook or email, so we can get it emptied as soon as possible.

We will receive 30p/kilo for items that are donated.



## Our New Committee

On 3 October, we held our first ever virtual AGM, on Zoom. We had 24 attendees, who heard all about the trials and tribulations of the last year, joined us in saying a fond farewell to outgoing Chair Emma Marmara and outgoing Treasurer Tracey Poole, and voted in the new team for 2020/21. Here they are...

Co-Chair: <b>Rebecca Smith</b> (Y6 & Y2)	Co-Chair: <b>Claire Winslade</b> (Y2 & EY)
Vice Chair & Stores: <b>Sally Cooper</b> (Y2)	Secretary: <b>Sarah Everson</b> (Y4)
Treasurer: <b>Emily Brooks</b> (Y2 & EY)	Vice-Treasurer: <b>Lisa Harris</b> (EY)
Grant Fundraiser: <b>Kate Fennell</b> (Y5 & Y2)	Designers: <b>Emma Ewing &amp; Brad Silby</b> (EY)
Secondhand Uniform Coordinator: <b>Jacquie Cullen</b> (Y4)	
Committee Member: <b>Jess Courtney</b> (Y3 & EY)	
Early Years Rep: <b>Lucy Carey</b> (Y3 & EY)	Year 1 Rep: <b>Penny Duly</b> (Y1)
Year 2 Rep: <b>Sally Cooper</b> (Y2)	Year 3 Rep: <b>Emi Daniels</b> (Y6 & Y3)
Year 4 Rep: <b>Kizzy Stoner</b> (Y5 & Y4)	Year 5 Rep: <b>Kizzy Stoner</b> (Y5 & Y4)
Year 6 Rep: <b>Emi Daniels</b> (Y6 & Y3)	

We still have two roles to fill: Sponsorship Coordinator and Raffle Coordinator. If you are interested in either of these positions, or just want to join our next meeting (on 12 November at 7:30pm on Zoom), please email [halsford.pta@gmail.com](mailto:halsford.pta@gmail.com)

## Developing the Polytunnel and Garden Areas

We have been busy clearing and planting the polytunnel in the last few weeks and are hoping for a bumper crop of herbs, salad and vegetables as well as some lovely flowers next year. We're also hoping to get a grant, to allow us to install a rainwater harvesting system for the polytunnel to create a more sustainable and environmentally friendly way of supplying water to it. Working closely with the school, we're exploring options of how to further improve the area around the polytunnel so watch this space for further updates!



## Dash of Difference Day: 23 Oct

Traditionally, we run non-uniform days on the last day of each half term, giving the children the opportunity to wear their own clothes to school in exchange for a donation.

On Friday 23 October, we will be doing something a little bit 'different'. While the children still need to wear clothing suitable for their learning that day; uniform, PE Kit or outdoor learning clothes, they can add a 'dash of difference'! Options include: crazy/colourful hair; nail varnish; a non-uniform jumper or hoodie; colourful socks or tights; odd socks; temporary or glitter tattoos and/or crazy head-gear.

If your child is taking part, please donate to: [www.virginmoneygiving.com/fund/dashofdifference](http://www.virginmoneygiving.com/fund/dashofdifference)



## Festive Fundraising

At this time of year, we would usually be feverishly planning a Christmas fair, but as that's not something we can realistically contemplate this year 😞, here are a few things we are planning instead.

🎁 Online Christmas Shop – We have a wide range of Christmas gifts and decorations which will be available to purchase from our shop on PTA Events: stocking fillers; packs of smellies; festive face masks; and lots of other handcrafted items, including the return of the wooden reindeer, and golden snitch bookmarks.

🎅 Santa Packages – While Santa may not be able to meet the children in his grotto this year, we will be creating packages that include a personalised letter, a video and a gift, which will be available to purchase for the children. More information to follow soon!

🎄 Raffle – We might not have a fair, but we can still have a raffle! We are busy sourcing some fantastic prizes, and will be revealing all the details after half term.

## Our Fundraising Year 2019/20

We raised a phenomenal £33,464.85 last year, and as a result were able to fund a wide range of items that will benefit the children. Here are the highlights of what we raised and how it was spent.

### What we raised...

Colour Run	£592
Sales at the 'Big Revel'	£295
Summer Book Bingo	£1,126
Fundraising Tea Towels	£760
Kids' Film Nights	£703
Spare Change Challenge	£693
Christmas Fair	£7,245
Aladdin Pantomime	£625
Fundraising Calendar	£1,001
Quiz & Chips	£496
Rotary Santa Collections	£365
School Discos	£434
Gin Night	£790
Socially Distanced Relay	£5,563
Lockdown Class Photos	£888
Virtual Balloon Race	£512
Tuck Shop	£1,555
Happy Bag Recycling	£576
Secondhand Uniform	£631
Donations	£1,093
Shopping Affiliate Schemes	£504
Sale of Handcrafted Items	£1,151
Face Masks	£5,219
200 Club	£853

### What we funded...

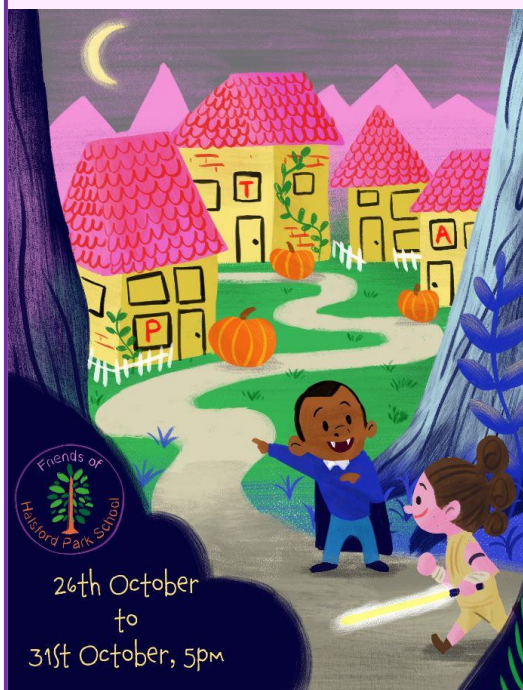
Defibrillator	£579
Book Corner Improvements	£2,045
Media Screen	£3,342
Bug Club Licence	£993
Twinkl Licence	£1,025
Laptops	£10,016
KS1 Phonics Books	£2,079
Year Group Funds	£1,400
(£100 per year group per term to help subsidise experiences or trips)	
SATs Books	£900
Y6 Leaver's Gifts	£182

### **From grants, we were able to provide the following:**

£1,166 for music equipment  
 £2,295 towards playground improvements  
 £720 towards laptops

We do have some small overheads of our own as well, and this year treated ourselves to a new storage shed and noticeboard for the drive.

## Pumpkin Trail



If you're looking for something to do with the children over half term, encourage them outdoors on a spooky search with our Pumpkin Trail! We have 29 (g)host houses around East Grinstead, each displaying a letter. Find all the letters to make a phantom-tastic phrase, collect a reward and enter our prize draw to win a pumpkin piñata, just in time for Hallowe'en night.

The trail is available from Monday 26 until Saturday 31 October at 5pm, and can be completed at any time and in any order. Trail sheets are £3.50 per family, and can be downloaded, along with an interactive map, by following this link:

<https://tinyurl.com/PumpkinTrail20>

## Photo Exhibition

Inspired by the National Portrait Gallery's 'Hold Still' exhibit (<https://www.npg.org.uk/hold-still/>), we are inviting the children to each submit a photograph that embodies or documents their experience of Coronavirus or lockdown. Rather than being a competition, this is a community project that will culminate in an exhibition at school that the children will be invited to look at and discuss in their class or year group bubbles. Photos may also be shared on our social media or the school's website. Further details can be found in a separate flyer which will be sent by email in the coming days.

**HALS  
FORD  
PARK**  
2020



Photo  
Exhibition



A showcase of our children's experiences in 2020.

Send your entry to:  
halsford.pta@gmail.com

Deadline: November 16th

CASH PRIZE  
EVERY MONTH!

IT  
COULD BE YOU!!

LESS THAN 50p  
A WEEK!

# WIN UP TO £100

and raise money for the children of  
Halsford Park School

by joining *Friends of Halsford Park*  
**CLUB**

# 200

Club 200 is a prize draw that pays out up to £100 to a lucky winner each month, as well as benefitting the school.

Joining Club 200 costs £24 per year, or £2 per month. When you join, you are allocated a number. If your number is pulled out in the monthly draw, you win half of the prize pot, and the school 'wins' the other half. The more people who join Club 200, the bigger the potential winnings!

To sign up for Club 200, please go to <https://tinyurl.com/HPClub200> email [halsford.pta@gmail.com](mailto:halsford.pta@gmail.com) or speak to Claire Tennent (Y1 and Y6 mum). Payments can be made annually by cheque or BACS, or you can spread your payments with a monthly standing order.

## Easy Ways to Help the PTA

Become an armchair fundraiser by signing up to any of the initiatives you see on this page. With Club 200 you are in with a chance of winning up to £100 each month, so it's well worth doing!

Christmas is on the horizon, so now more than ever, please sign up to Amazon Smile and Give as You Live Online or Easyfundraising, then the Christmas shopping you do online will raise funds for the school! It's quick and easy to set up and doesn't cost you a penny.

Thank you!

 [easyfundraising.org.uk](http://easyfundraising.org.uk)  
feel good shopping



# EASY PEASY

and it's  
**free**

Help us by collecting **FREE donations**  
every time you shop online



1. Join



2. Shop



3. Raise

Find out more and join here:  
[easyfundraising.org.uk/causes/halsfordpark](http://easyfundraising.org.uk/causes/halsfordpark)



## Raise **FREE** donations

for us just by *shopping online*

Yes, it's that easy!

A percentage of every pound you spend online will be donated to us when you shop via:

[www.give.as/charity/the-friends-of-halsford-park-school/ct28704](http://www.give.as/charity/the-friends-of-halsford-park-school/ct28704)

Shop at 4,000+ stores *Best thing is... it won't cost you a penny extra!*

 **Give as you Live®**

Stay in touch      

Join our 100,000+ Give as you Live Community

# amazon smile

You shop. Amazon gives.

By using Amazon Smile, and nominating The Friends of Halsford Park School as your chosen charity, Amazon will donate 0.5% of the value of your shop to the PTA every time you make a purchase. Not sure how? We have made a useful tutorial to show you! It costs you nothing, and once it's set up it looks after itself.

<https://youtu.be/BhMGwgxJ6-M>